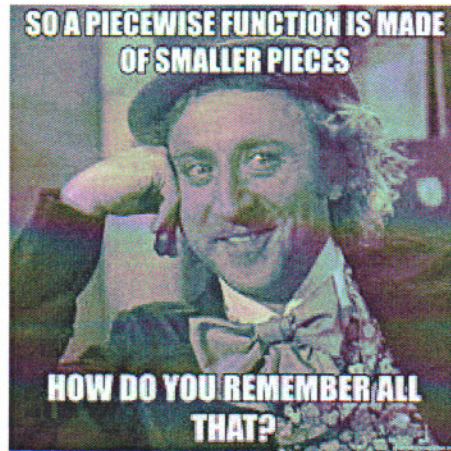


Precalculus

Lesson 2.3: Properties of Functions

Lesson 2.4: Library of Functions; Piecewise-defined Functions

Mrs. Snow, Instructor



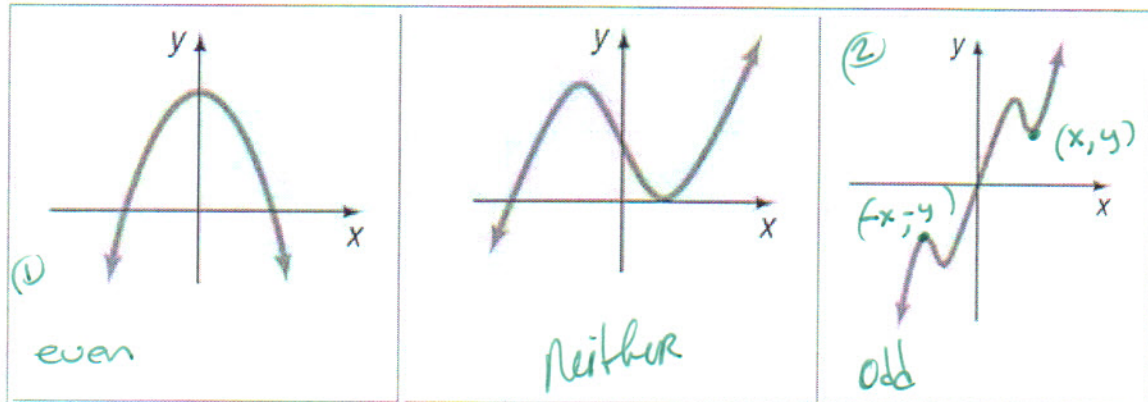
Even and Odd Functions

Think back to algebra, how do we determine the degree of a function?

- A function is **even** if and only if its graph is symmetric with respect to the y-axis.
- Whenever the point (x, y) is on the graph of f then the point $(-x, y)$ is also on the graph.
- $f(-x) = f(x)$

- A function is **odd** if and only if its graph is symmetric with respect to the origin.
- For every point (x, y) on the graph, the point $(-x, -y)$ is also on the graph.
- $f(-x) = -f(x)$

Identify if the function is even, odd or neither



Even or Odd?

| | | |
|---|---|--|
| $f(x) = x^2 - 5$ $f(-x) = f(x) ?$ $(-x)^2 - 5 \stackrel{?}{=} x^2 - 5$ $x^2 - 5 = x^2 - 5$ \therefore <u>Even</u> (Graph) | $g(x) = x^3 - 1$ $f(-x) = -f(x) ?$ $(-x)^3 - 1 \stackrel{?}{=} -(x^3 - 1)$ $-x^3 - 1 \neq -(x^3) + 1$ <u>Neither</u> (Graph) | $h(x) = 5x^3 - x$ $f(-x) = -f(x) ?$ $5(-x)^3 - (-x) \stackrel{?}{=} -(5x^3 - x)$ $-5x^3 + x = -5x^3 + x$ <u>true</u> <u>Odd</u> |
|---|---|--|

Increasing, Decreasing, or Constant?

Functions are often used to model changing quantities. Where the slope is positive we say it is increasing, and where the slope is negative we say it is decreasing. Horizontal? It is neither increasing nor decreasing; it is considered constant.

Definition:

A function f is **increasing** on an open interval I if, for any choice of x_1 and x_2 in I , with $x_1 < x_2$, we have $f(x_1) < f(x_2)$.

A function f is **decreasing** on an open interval I if, for any choice of x_1 and x_2 in I , with $x_1 < x_2$, we have $f(x_1) > f(x_2)$.

* The open interval (a, b) consists of all real numbers x for which $a < x < b$.

Determine where a function is increasing, decreasing or constant:

| | |
|---|--|
| <p>Where is the function increasing? $(-4, 0)$</p> <p>Where is the function decreasing? $(-6, -4) \cup (3, 6)$</p> <p>Where the function constant? $(0, 3)$</p> | |
|---|--|

Maximum and Minimum: Absolute and Local

A function f has a **local maximum** at c if there is an open interval I containing c so that for all x in I , $f(x) \leq f(c)$. We call $f(c)$ a **local maximum value of f** .

A function f has a **local minimum** at c if there is an open interval I containing c so that, for all x in I , $f(x) \geq f(c)$. We call $f(c)$ a **local minimum value of f** .

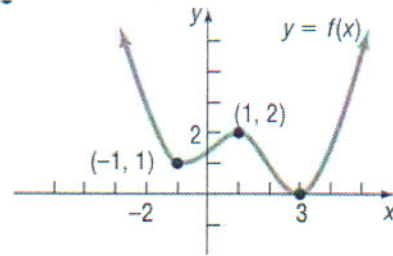
Note: Local maximum and minimum occur in open intervals.

(a) At what number(s), if any does f have a local maximum? (where are the local max?)
at $x = 1$

(b) What are the local maxima?
Local max is $f(1) = 2$
or $y = 2$

(c) At what number(s), if any does f have a local minimum?
at $x = -1$ $x = 3$

(d) What are the local minima?
 $f(-1) = 1$ $f(3) = 0$



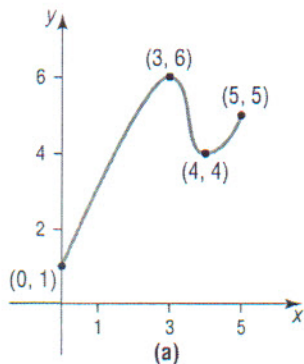
(e) List the intervals on which f is increasing
 $(-1, 1) \cup (3, \infty)$

(f) List the intervals on which f is decreasing
 $(-\infty, -1) \cup (1, 3)$

Find absolute maxima and absolute minima, if they exist

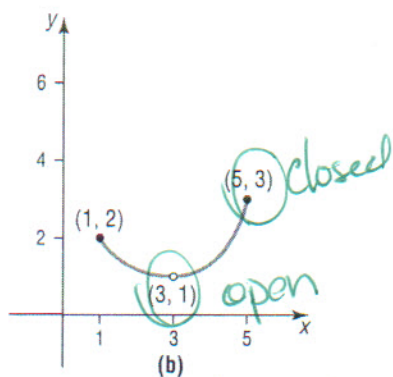
Extreme Value Theorem

If f is a continuous function* whose domain is a closed interval $[a, b]$, then f has an absolute maximum and an absolute minimum on $[a, b]$.



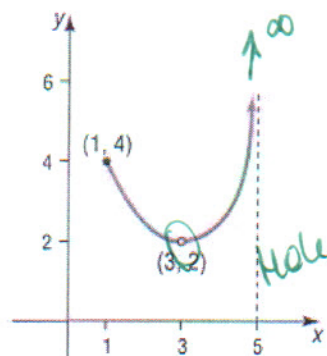
Absolute max at $x = 3$
Absolute max is $f(3) = 6$
 $y = 6$

Absolute min at $x = 0$
Absolute min is $f(0) = 1$



Absolute max at $x = 5$
Absolute max is $f(5) = 3$

no Abs Min



no Abs Min.
no Abs Max.

Calculators often help in determining absolute maxima and minima and find where and find where a function is decreasing or increasing.

Use a graphing utility to graph $f(x) = 6x^3 - 12x + 5$ for $-2 < x < 2$. Approximate where f has a local maximum and where f has a local minimum.

Loc. max at $x = -.816$

Loc. max is $f(-.816) = 11.53$

Loc. Min at $x = .816$

Loc. Min is $f(.816) = -1.53$

Average Rate of Change

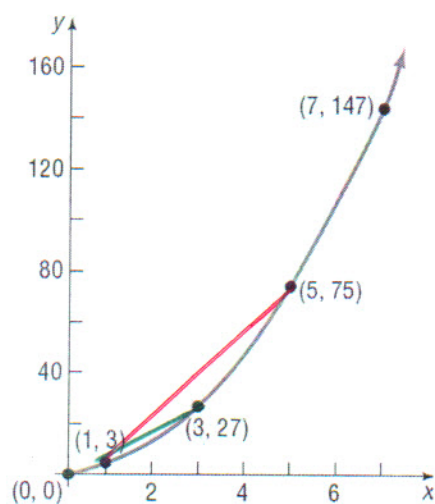
$$\text{Average rate of change} = \frac{\Delta y}{\Delta x} = \frac{f(b) - f(a)}{b - a} = m_{sec}$$

When a function is graphed and the *average rate of change* is calculated, graphically a line drawn between $f(a)$ and $f(b)$ is called a **secant line**. The *average rate of a secant line* is designated as: m_{sec}

Find the average rate of change of $f(x) = 3x^2$:

a) From 1 to 3

b) From 1 to 5



$$\textcircled{a} \quad \frac{\Delta y}{\Delta x} = \frac{27 - 3}{3 - 1} = \frac{24}{2} = 12$$

$$\textcircled{b} \quad \frac{\Delta y}{\Delta x} = \frac{75 - 3}{5 - 1} = \frac{72}{4} = 18$$

Lesson 2.4

Step Function: A function whose graph is defined by the greatest integer function! WHAT!

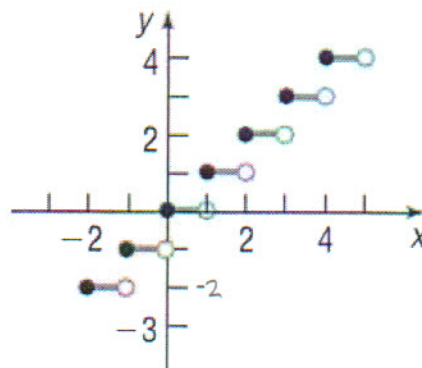
Greatest Integer Function

$$f(x) = \text{int}(x)^* = \text{greatest integer less than or equal to } x$$

$$n \leq x$$

To graph this function, start by building a table of x values. Make sure to include negatives and fractions. Use the above definition to determine the output value of $f(x)$.

| x | $n \leq x$ | $\text{int}(x)$ |
|------|---------------|-----------------|
| -2 | $n \leq -2$ | -2 |
| -1.5 | $n \leq -1.5$ | -2 |
| -1 | $n \leq -1$ | -1 |
| -0.5 | $n \leq -0.5$ | -1 |
| 0 | $n \leq 0$ | 0 |
| 0.5 | $n \leq 0.5$ | 0 |
| 1 | $n \leq 1$ | 1 |
| 1.5 | $n \leq 1.5$ | 1 |
| 2 | $n \leq 2$ | 2 |
| 2.5 | $n \leq 2.5$ | 2 |



Is this a function? Vertical line test: pass \Rightarrow function

Is it continuous or discontinuous?

Breaks in graph.

continuous: a function in which its graph has no gaps or holes in it. It can be drawn without lifting your pencil from the paper.

discontinuous: a function in which its graph has holes or breaks in the curve. To draw this graph you would need to lift your pencil off the paper.

Piecewise Function: a function that is defined by different formulas on different parts of the domain.

3 different functions are used to make our function.
we use pieces

graph:

$$f(x) = \begin{cases} -2x + 1 & \text{if } -3 \leq x < 1 \\ 2 & \text{if } x = 1 \\ x^2 & \text{if } x > 1 \end{cases}$$

Find $f(-2) = -2(-2) + 1 = \underline{5}$

$f(1) = \underline{2}$

$f(2) = 2^2 = \underline{4}$

What is the domain? Range?

D: $[-3, \infty)$ R: $(-1, \infty)$

Locate intercepts

$(0, 1)$ $(\frac{1}{2}, 0)$

Is f continuous over its domain?

discontinuous

