

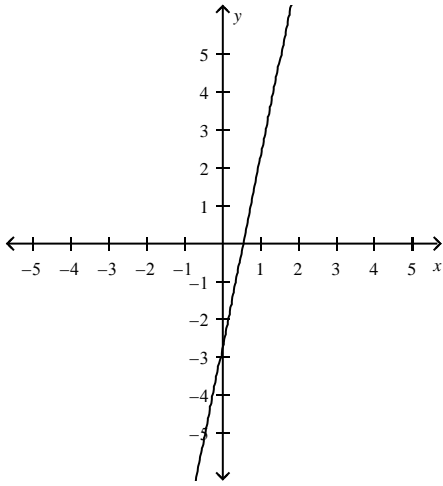
Chapter 5: 5.1 - 5.5 Exam Review

Answer Section

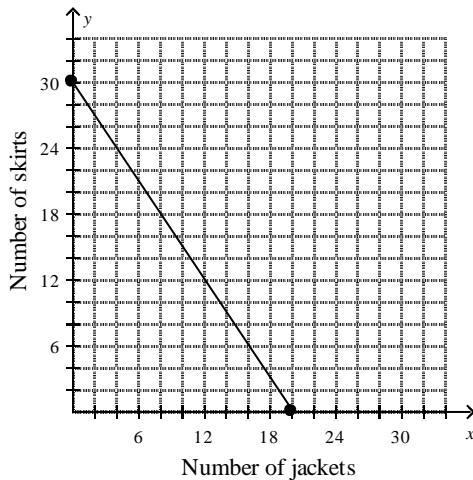
Accuracy of these answers is not 100%. When in doubt, ask your instructor!!!!

SHORT ANSWER

- Yes; there is a constant change in x that corresponds to a constant change in y .
-



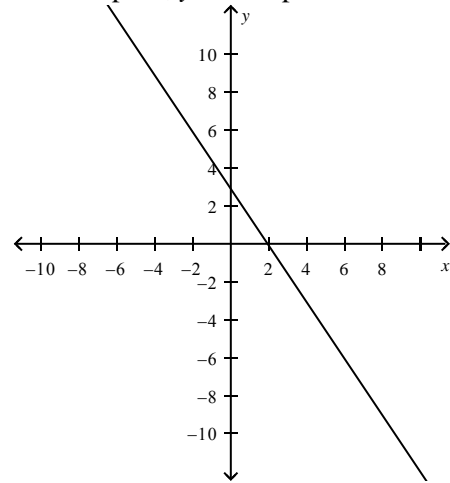
- x -intercept: -8 , y -intercept: 4
- x -intercept: -3 , y -intercept: -6
- x -intercept: 3 , y -intercept: -3
-



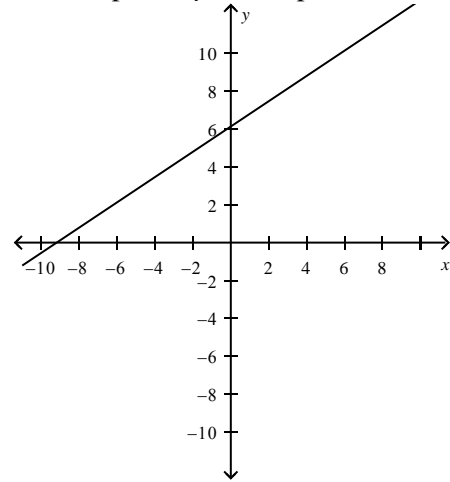
The x -intercept is $(20, 0)$. The x -intercept gives the total number of jackets that can be made from one bolt of fabric when only jackets are made.

The y -intercept is $(0, 30)$. The y -intercept gives the total number of skirts that can be made from one bolt of fabric when only skirts are made.

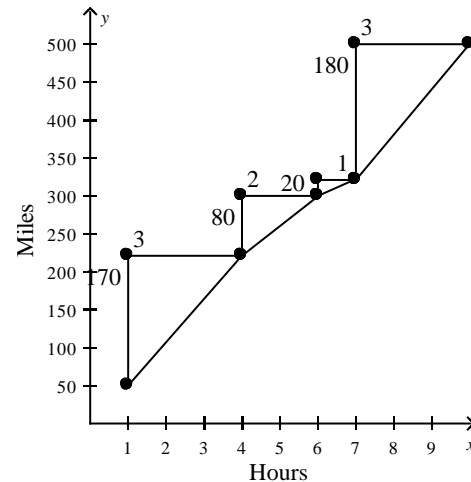
- x -intercept: 2 , y -intercept: 3



- x -intercept: -9 , y -intercept: 6



-



10 – 18 find the slope of the line

10. $\frac{2}{3}$

11. $-\frac{3}{4}$

12. $-\frac{5}{3}$

13. $-\frac{2}{3}$

14. -5

15. $\frac{1}{2}$

16. $\frac{1}{3}$

17. $\frac{4}{5}$

18. $-\frac{1}{6}$

19. $h = 56t + 158$

20. $\frac{1}{4}$ lb per person

21. Not a direct variation.

22. D.V $k=5/3$

23. This is a direct variation, because it can be written as $y = -2x$, where $k = -2$.

24. yes; $k = 4$; $y = 4x$

25. $y=9x$